

## MAX-IP280



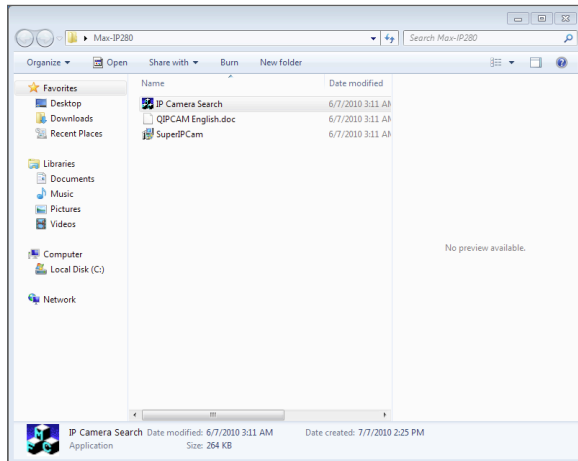
### Quick Guide

#### 1.0 Installation

Begin by applying a 12v power supply to the camera and connecting your Max-IP280 to your network once you have mounted your camera.

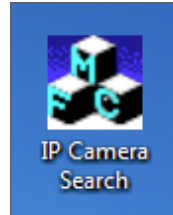


#### 2.0 Install both the IPCamera Search and SuperIP Cam applications on your PC.

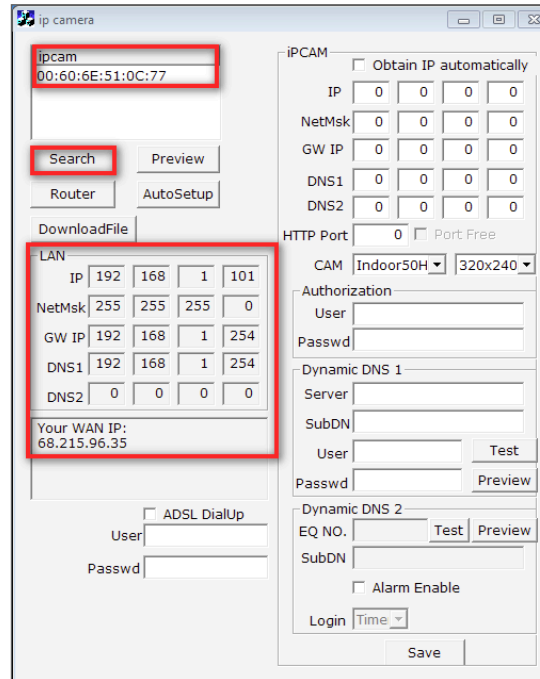


**Note \*** Your Max-IP280 must be on the same network as the PC running the IP Camera Search. You may also use a crossover cable direct from the camera to your PC.

#### 3.0 Now run the IPCamera Search Application



The following window will open.



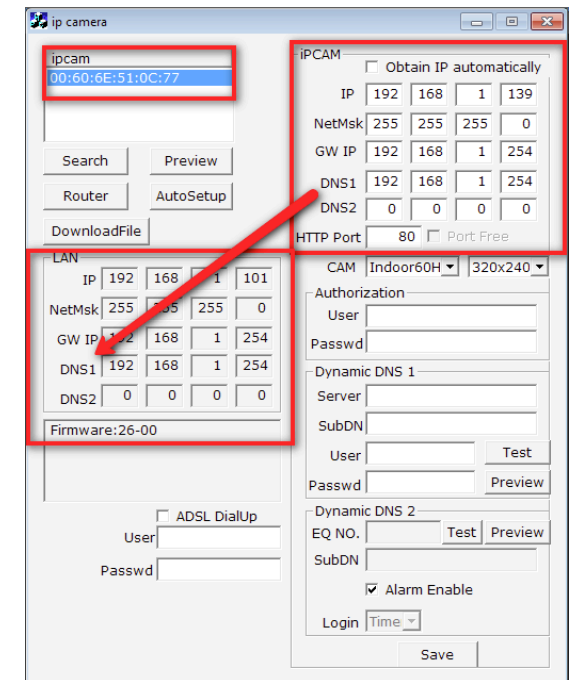
Click the search button. If your connection is properly done and your Max IP280 is on the same network as your PC you will see the MAC address of your MAX-IP280 appear. This indicates that the software has found your camera and is ready to be configured.

In the LAN section you will notice the IP configuration of your PC and the WAN IP of your current network. The WAN IP is the IP you will use to connect to your IP camera when outside your network.

#### 4.0 Configure IP Camera

The next step is to click and highlight the MAC address for the IP camera. This will display the IP information in your MAX-IP280. You may manually change the IP address in the IP camera if you would like or click the AutoSetup button to have the Software do this for you.

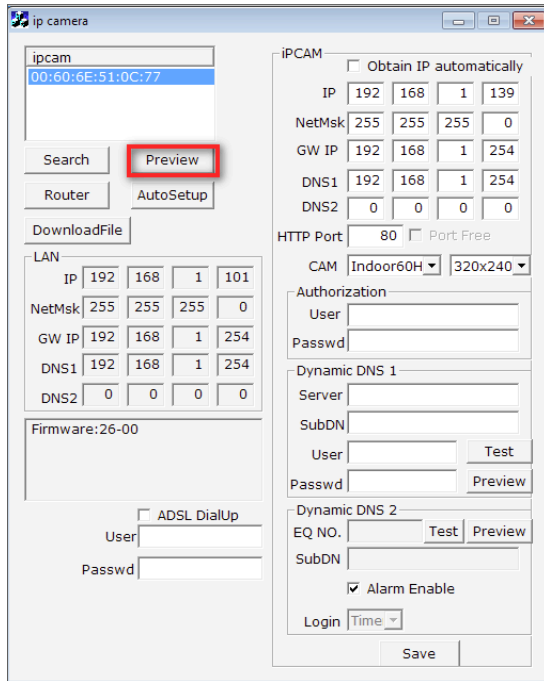
**Note\*** Ensure that the DNS IP on your IP camera is the same as your LAN DNS. If this is incorrect you will not be able to view your camera remotely.



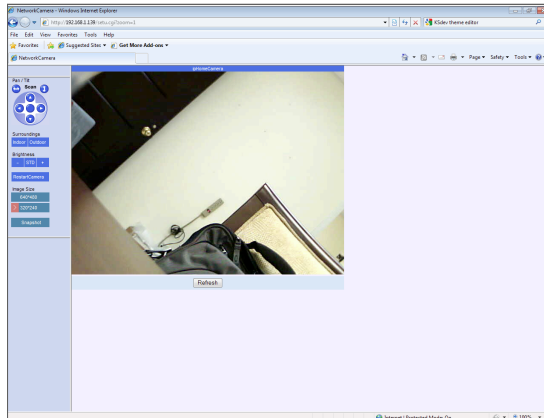
Next select the HTTP port you would like to use to view your camera remotely. The default port is 80. You will now need to open this port within your router to view the camera remotely. If you will only be using this camera on your local network you do not have to open this port on your router.

## 5.0 Test IP Camera

Now click on Preview to test your camera on the network. This should open your Internet Explorer Web Browser and allow you to see your live IP camera.

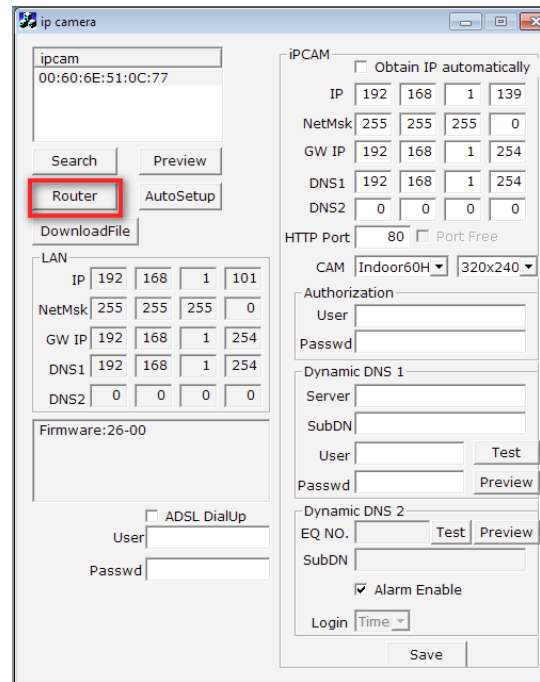


This is what you should see. If you have video your IP camera is properly configured.

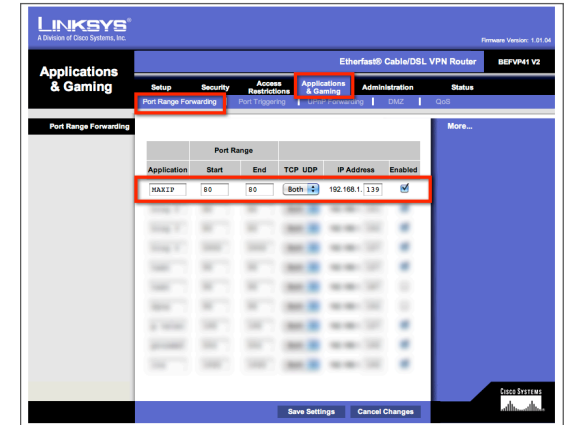


## 6.0 Configure your Router

The last step in the process is to open up the HTTP port in your router to allow you to view your camera remotely. Click the Router button. The system will attempt to access your router and allow you to program the opening of the ports. If your router page does not open you may need to access your router directly. Please refer to your routers manual for guidance.



For this example I will be using a Linksys router to open my ports.



In a Linksys router you want to choose the Applications and Gaming Tab followed by the Port Range Forwarding Tab.

The router will then ask you for the Application name. Enter any name you like. Next, you enter the Port Range. In this case our HTTP port is 80 so you enter 80 for both the Start and End. For TCP/UDP select both followed by the IP address of your MAX-IP280 camera. (192.168.1.139) Next check the box labeled Enabled and press the Save Settings button.

Your MAX-IP280 now has its ports forwarded and is accessible remotely via your WAN IP.

If you do not know how to forward your ports or are using a different router you may find instructions at the portforward.com website. This website has many guides and manuals on how to open ports on various router models.

You may now proceed to use your SuperCam IP software to view multiple MAX-IP280 cameras using the IP information for each of your cameras.